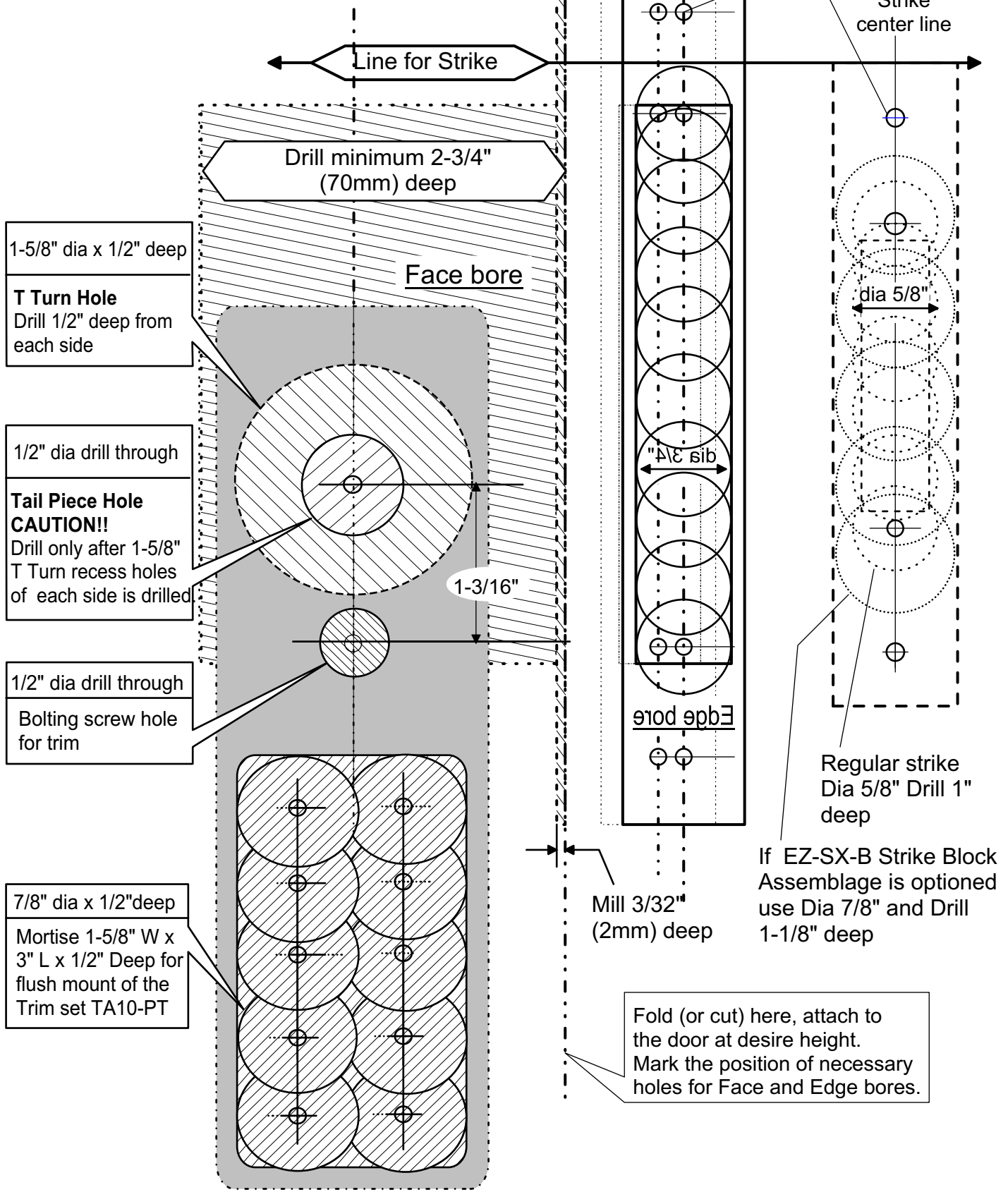


Installation Template for E240PT-40

Please read this Template and the Trim set Installation menu carefully before drilling and mortising the door.



1-5/8" dia x 1/2" deep
T Turn Hole
 Drill 1/2" deep from each side

1/2" dia drill through
Tail Piece Hole
CAUTION!!
 Drill only after 1-5/8" T Turn recess holes of each side is drilled

1/2" dia drill through
 Bolting screw hole for trim

7/8" dia x 1/2" deep
 Mortise 1-5/8" W x 3" L x 1/2" Deep for flush mount of the Trim set TA10-PT

Door thickness 1-3/8"

Mounting screw

Strike center line

dia 5/8"

Regular strike Dia 5/8" Drill 1" deep

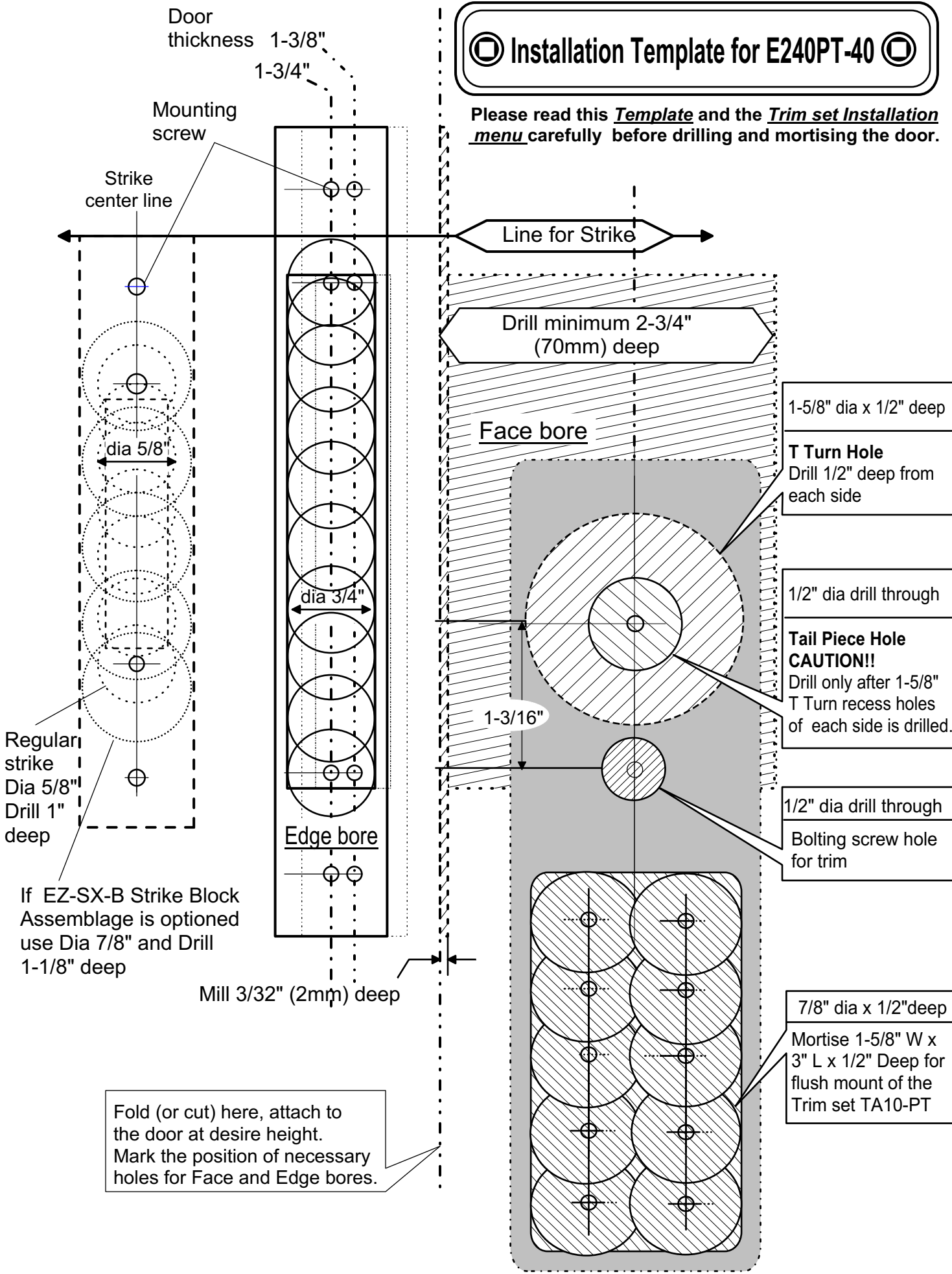
If EZ-SX-B Strike Block Assemblage is optioned use Dia 7/8" and Drill 1-1/8" deep

Mill 3/32" (2mm) deep

Fold (or cut) here, attach to the door at desire height. Mark the position of necessary holes for Face and Edge bores.

Installation Template for E240PT-40

Please read this Template and the Trim set Installation menu carefully before drilling and mortising the door.



Door thickness 1-3/8"
1-3/4"

Mounting screw

Strike center line

Line for Strike

Drill minimum 2-3/4" (70mm) deep

Face bore

1-5/8" dia x 1/2" deep

T Turn Hole
Drill 1/2" deep from each side

1/2" dia drill through

Tail Piece Hole
CAUTION!!
Drill only after 1-5/8" T Turn recess holes of each side is drilled.

1/2" dia drill through

Bolting screw hole for trim

Regular strike
Dia 5/8"
Drill 1" deep

If EZ-SX-B Strike Block Assemblage is optioned use Dia 7/8" and Drill 1-1/8" deep

dia 3/4"

Edge bore

1-3/16"

Mill 3/32" (2mm) deep

7/8" dia x 1/2" deep

Mortise 1-5/8" W x 3" L x 1/2" Deep for flush mount of the Trim set TA10-PT

Fold (or cut) here, attach to the door at desire height. Mark the position of necessary holes for Face and Edge bores.